

# NEWSLETTER

A huge thank-you to Kate Neal, who ran 'Culture of the Heart' sessions in each class and then a parent session on Wednesday. Thanks to all those families who attended. I am really inspired by Kate's work and I love how she helps us all to appreciate the power words can have. I can see how our sessions using her resources are really helping the children to express their emotions; and describe themselves and others in a variety of positive ways. I have included a few slides from her presentation later in the newsletter and in the safeguarding section. There are also copies of the presentation in the office if you would like one. At the end of the newsletter, I have put a poster of many of the words we use in 'Culture of the Heart'. Perhaps you could use these at home too. We have paper copies in the office if you would like one. Maybe pop it on the fridge. Point out to your child when they are being thoughtful, inquisitive, truthful, generous etc.

On Monday the staff enjoyed the Crofty MAT training day. The teachers met at Porthleven and teachers from the 16 schools worked together to create a curriculum week linked to sustainability for the summer term. As a trust, we are committing to work towards becoming a net zero trust and helping the children to understand the importance of looking after our world. As a school, we are well known for our environmental work and it is exciting working with other schools on this. This year we are working on the pledges that the pupil trust council made at their summit this year. Ellie, Josh and Evelyn are doing an excellent job at representing us at the council. Some of the TAs attended autism training at Roskear school. They said that it was great training and really helped them to think how we can best support all of our children.

Year 5s had a fantastic afternoon at the Life Skills session at Tolvaddon Fire station this week. They got to explore 8 different activities including RNLI, GWR, cyber security, electrical safety, Sustrans cycle knowledge and Go Bus safety.

**Cassie Pamplin**

## CERTIFICATES OF EXCELLENCE



Maple Class: Olivia - For always working so hard and always with a smile!

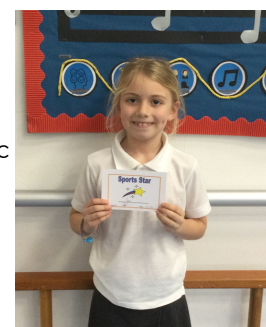
Rowan Class: Bodhi - For always working hard.

Sycamore Class: Elsie - For having a fantastic attitude to her learning.

Oak Class: Beth - For always being positive and cheering everyone up!

Cherry Class: Amelie - For hard work and enthusiasm in lessons.

## SPORTS STAR



This week's Sports Stars is: Sienna

## STAR WRITERS



Maple Class: Maren

Rowan Class: Molly

Sycamore Class: Clara

Oak Class: Eva

Cherry Class: Indya T

## VALUE CHAMPIONS



Maple Class: Ella G

Rowan Class: Frank L

Sycamore Class: Harry

Oak Class: Lowen W

Cherry Class: India L



# Portreath Primary School

## THOUGHT OF THE WEEK

### Safeguarding/Health and Safety

#### Some information from Kate Neal's session:

Relationships are one of the most important aspects of our lives. People who are more socially connected to family, friends, or their community are happier, physically healthier, and live longer, with fewer mental health problems than people who are less well connected.

It's not just the number of friends you have, and it's not whether or not you're in a committed relationship, but it's the quality of your close relationships that matters. Living in conflict or within a toxic relationship is more damaging than being alone.

Children will look to you to tell them not necessarily what they are, but what they are capable of becoming.

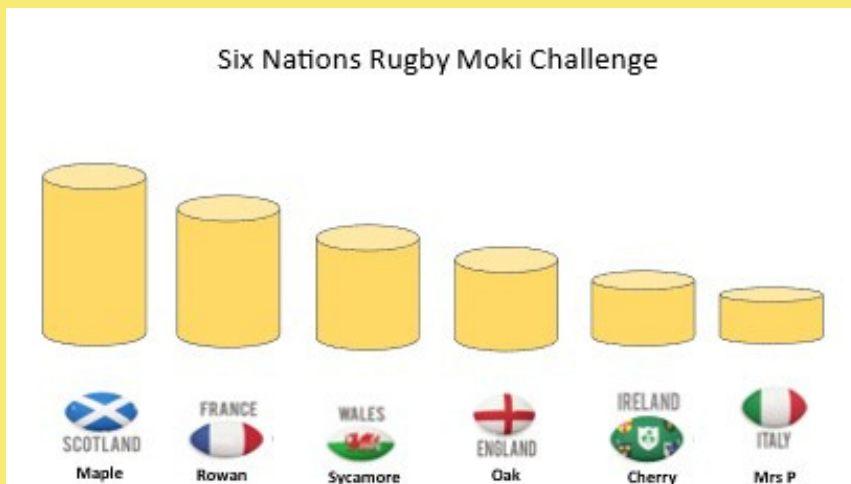


## House Winner this Week is: 100 Acre Wood

### PE News

#### Moki Watch Challenge

This half term's Moki challenge is linked to the Six Nations Rugby Championship. Each class has been allocated a country and their aim is to get as many steps as possible to place their country on a podium.



#### Lunchtime Football

Please bring in spare footwear so this can take place on the field.

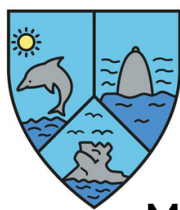
Monday – Girls only

Tuesday – KS1

Thursday – KS2

Friday – Boys only





# Portreath Primary School

## Maple Class



Dear Maple class

As spring approaches you have been chosen to look after and try and hatch 6 special eggs. If you put them in your incubator tomorrow they should hopefully hatch in 20/21 days time. Please let me know how you get on.

Trevaskis Farm

Maple's eggs (13th)

1	2	3	4	5	6	7
8	9	10	11	12	13	14
15	16	17	18	19	20	21

This week Maple class took a surprise delivery of some eggs from Trevaskis Farm. They have asked them to look after them and see if they will hatch. We have found out that it should take 21 days so have made an advent type chart so we can see the big day arriving! So EGG-CITING!!!!

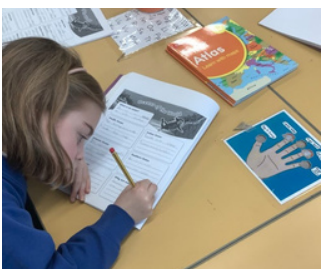
## Rowan Class



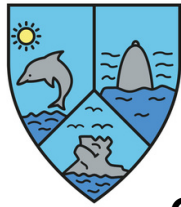
This week we have started learning about Queen Elizabeth I and Queen Elizabeth II. We have begun our Art topic by looking at Tudor portraits and had a go at creating our own portraits. We learnt that Queen Elizabeth I was the first female monarch. In English we have read Cinderella and have used conjunctions in our sentences.



## Sycamore Class



This week we have started our topic all about the oceans and protecting them. In Geography we gathered information about the 5 different oceans and considered why the oceans are important. We had a fantastic session with Kate from Culture of the Heart on Wednesday and enjoyed drawing emotions. In Maths the Y3s have enjoyed measuring things as part of our length and perimeter unit.



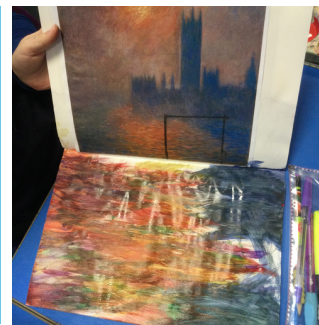
# Portreath

## Primary School

### Oak Class



In Oak this week, we have been continuing our lessons on rivers, with a focus on the main European rivers. In Art, we have been preparing for our trip next week, by looking in more detail at the techniques of Monet. We practiced mixing colours and then working quickly, to create layers of paint.



### Cherry Class



In Cherry class this week we have been exploring Mayan myths in our English lesson and are working towards writing our own story based on a Mayan myth. We have also now completed our colourful art work inspired by the artist Dan Fenelon and it is looking great on display! On Wednesday we really enjoyed working with Kate from Culture of the Heart and we all made a lovely keyring to take home to someone.

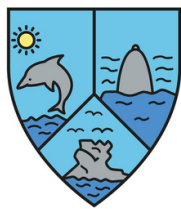
**AFTER SCHOOL CLUBS**

PLEASE NOTE ALL CLUBS INCLUDING BREAKFAST CLUB MUST NOW BE BOOKED & PAID IN ADVANCE ON PARENT PAY.

Breakfast by 9pm night before and After School Club by 9am on the day.

Maths Whizz Club (free) Tuesday's and Wednesday's until 4:20pm

Monday	Mindfulness Monday (calm activities) Miss Cafe & Mrs Barnes
Tuesday	Chirpy Tuesday (active movers) Miss Cafe & Mrs Barnes Maths Whizz (free until 4:20pm)
Wednesday	Wacky Wednesday (inside/outside) Mrs Barnes & Mrs Rosser Maths Whizz (free until 4:20pm)
Thursday	Thoughtful Thursday (writing & crafts) Mrs Barnes & Mrs Rosser
Friday	Funky Friday (dancing & painting) - Mrs Barnes



# Portreath Primary School

## REMINDERS

**WORLD BOOK DAY  
THURSDAY 7TH MARCH,  
DON'T FORGET TO WEAR  
YOUR COSTUME**

**27TH FEB-BRING BIKES  
AND SCOOTERS TO BE  
FIXED BY DR BIKE!**

## Attendance

This week's attendance is as follows:

Maple Class - 85.6%

Rowan Class - 96.9%

Sycamore Class - 93%

Oak Class - 92.7%

Cherry Class - 94.4%

Whole school attendance  
for the year is currently is : 94.4%

## PE DAYS

**Monday - Oak**

**Tuesday - Sycamore**

**Thursday - Cherry**

**Thursday - Maple**

**Friday - Rowan**

**Outdoor Learning on**

**Fridays for Sycamore (except  
8th March when it will be Oak)**

## DATES

27th Feb - Free Cycle / Scooter Servicing

7th March - World Book Day

26th Mar - Open class 2:50-3:15pm

17-19th April - Yr 4 Residential Camp

13th May - KS2 SATS week

17th May - Open class 2:50-3:15pm

10th June - Sports Day

13th June - back up Sports Day

17-19th June - Yr 5 & 6 Residential Camp

1st July - Yr 5 Surf Day

17th July - Open class 2:50-3:15pm

## INSET DAYS

24th July 2024

## TERM DATES

Last Day of Spring Term - 28th March

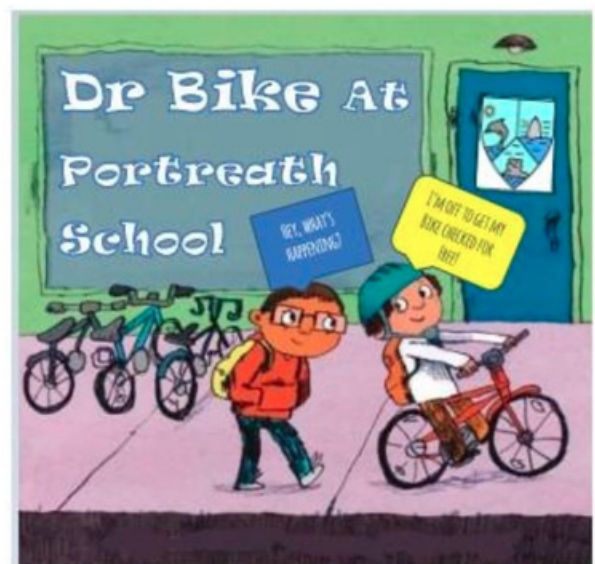
First Day Summer Term - 15th April

Bank Holiday - 6th May

Half Term - w/c 27th May

Last Day Summer Term - 23rd July

## Community News



**Cycle or Scoot into school on Tuesday  
27th for a Free Cycle/Scooter  
service.**

Bike it Dave from Sustrans will be here from 8.15



# Culture of the Heart words

Inventive	Brave	Encouraging	Powerful	Kind	Adaptable	Genuine
Peaceful	Strong	Determined		Fun	Pioneering	Amazing
Imaginative	Supportive	Forgiving		Wise	Dynamic	Eloquent
Helpful	Positive	Inspiring		Unique	Splendid	Vibrant
Adventurous	Believed-in	Funny		Logical	Honourable	Peace-maker
Loving	Out-going	Considerate		A gift	Delightful	Original
Humble	Respectful	Good-listener		Lovely	Protective	Careful
Life-giving	Dependable	Beautiful-hearted		Precious	Friendly	Valuable
Creative	Joyful	One-of-a-kind		Faithful	Cheerful	Trustworthy
Visionary	Understanding	Gentle		Inclusive	Inquisitive	Generous
Patient	Enthusiastic	Free		Grateful	Thankful	Hopeful
Bold	Confident	Happy	Responsible	Unselfish	Worthy	
Modest	Honest	Good	Kind-hearted	Resouraful	Truthful	
Caring	Hard-working	Intelligent		Problem-solver	LOved	
Hoped-for	Thoughtful	Mature		Compassionate		
Resilient	Capable			Consistent		

We want the children at our school to feel

Valued  
Seen  
Capable  
Included  
Empowered  
Loved  
Proud



the Culture of the Heart.com  
TEACHING RESOURCE

"Be careful with your words.  
Once they are said,  
they can be only forgiven,  
not forgotten."

Unknown



the Culture of the Heart.com  
TEACHING RESOURCE

Safe



Feeling seen and heard. Feeling valued and cared for, and that you belong.

Secure · Reliable · Non threatening  
Free from harm