

NEWSLETTER

The staff had a fabulous day at Treloweth School, where over 400 members of staff from the Crofty schools gathered for training. The keynote speaker was Ellie Baker. She led my 10-day Trauma Informed Schools course several years ago, so I was delighted to hear her speak again. She is such an inspirational person. It was great that all the teachers and TAs got to hear her words of wisdom about how to best support children emotionally in school. There were a variety of workshops for staff to attend, which were thought-provoking, and full of ideas to use back at school.

Wednesday was a very exciting day! The building work to create our two new classrooms has begun. Dan and his team have made a brilliant start. Tamsin Lamb, Crofty's Director of Education, and Steve Eva, Estates Manager, came to have a look. Miss Clarke, as the longest serving member of staff, along with our eldest and youngest children got to go on site; some of us got to sit on the digger too! The children will get regular opportunities to take a look at what is happening, and we are hoping to put up some pictures and information on the fence for all to see. The crane will hopefully be arriving next Friday to lift the frame into place. By the end of half term the building will be in place. The next few weeks will then be focused on the inside of the building. Thank you to everyone for their patience whilst the car park is reduced. It is essential that it is not blocked at any point.

Cherry Class were lucky enough to meet the marine conservation manager from The Wildlife Trust this week. She gave a very engaging talk, and the children were focused and engaged by her. I think it is a topic that they are very passionate about. Next week they are part of an important community conversation linked to sustainability. We will be holding another community conversation in November for parents with their children (from any class). Please look out for the poster on Dojo.

This week in assembly we focused on being creative, one of our 3 Cs. We want everyone to be curious, creative and courageous. We explored what creativity means and how we can be creative at school. I loved how the children recognised that you can be creative in subjects such as science and maths, as well as in subjects such as art and music. They suggested how we get to be creative when playing games. We also read a book about a creative octopus that played a ukelele and another called 'The Wonder'.

Cassie Pamplin

CERTIFICATES OF EXCELLENCE



Maple Class: Isaac - For excellent mathematics.
 Rowan Class: Olivia - For being an enthusiastic and ambitious learner.
 Sycamore Class: Archie - For being a sensible and efficient learner.
 Birch Class: Phoebe - For working courageously when tackling tricky maths problems!
 Oak Class: Grover - For always working so hard in all his lessons!
 Cherry Class: Will - For sharing his fantastic science and geography knowledge.

SPORTS

STAR

Molly



STAR WRITERS



Millie.N
 Bella
 Tora
 Harry.F
 India & Eva
 Elsie- Belle

PORTREATH LEAVES



Lamorna
 Matthew
 Lenny
 Seb
 Isla.P
 Mia

MATHS WIZARD

Paige.P





Portreath Primary School

THOUGHTS OF THE WEEK

Safeguarding and Health and Safety

Road safety is so important. Please think carefully about where and how you drop off. Hayley, our crossing patroller, has also reported members of the public (not parents) do not always stop when they should. Please take extra care crossing the road.

Mental Health

If you are worried about your own or someone else's mental health call the Cornwall 24/7 NHS mental health response line on 0800 038 5300. It's free to access.



House Winner this Week is: Enchanted Wood

PE News

Sports Leaders

We have our new sports leaders who have trained for half a term. they have developed essential skills in leadership, teamwork and communication.

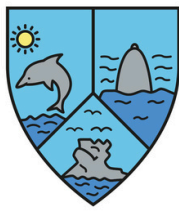
Mrs Doble had a message for them in assembly today:
"As you step into your new roles, remember you have the power to make a difference in our school. We are excited to see how you will use your training to enhance PE, sport and playtime experiences. Keep up the great work-congratulations to you all."



Congratulations to our Cross Country Runners

Day 1 of Building Our New Classroom



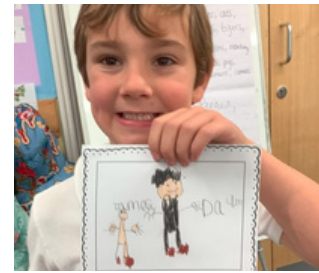


Portreath Primary School Maple Class



This week we have been thinking about the four seasons. We have learnt a song and sorted objects to match the seasons. Maple Bear has been dressed appropriately for each season and then some children made their names in the autumn tough spot.

Rowan Class



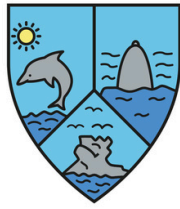
This week we have been busy writing non-chronological reports about different animal groups. We've loved bringing our science and English learning together and learning lots of fascinating facts. In RE, we have been practicing being grateful for our world, like Christians do at harvest. We wrote thank you letters to the people who made our lunch to show our gratitude.



Sycamore Class

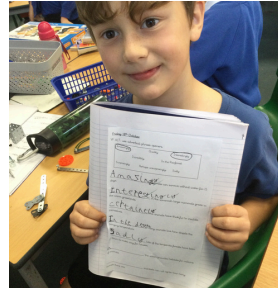
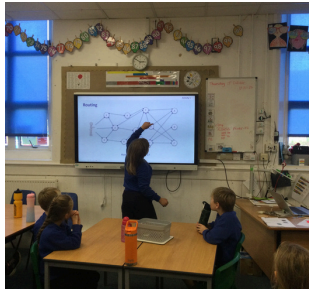


This week in science we have been learning about the importance of exercise in staying healthy. We learnt about our heart rate and how exercise affects it. We carried out an investigation looking at what raises our heart rate and were lucky enough to hear a heart with the aid of a baby Doppler and a stethoscope, provided by Molly's parents! In DT we learnt how to hold and use a knife correctly to prepare food – ready for our practical session next week.

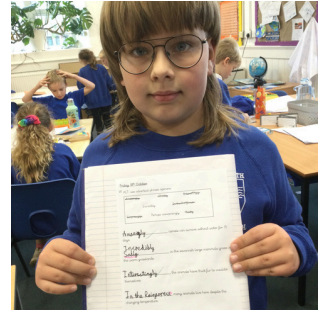


Portreath Primary School

Birch Class



The children have thoroughly enjoyed the first stage of making their pencil cases. We have learnt to sew a running stitch to join two parts of our material together. They are already looking fabulous. In computing this week, we really enjoyed learning about the internet and how it is organised and the terminology. In Spanish with Mrs Whitford, we learnt how to ask and reply to simple questions! bien hecho!

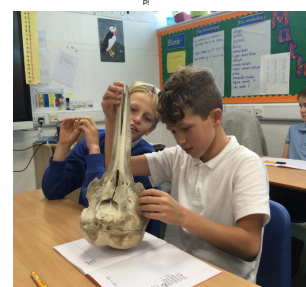


Oak Class



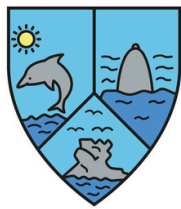
This week we have continued with our non-chronological reports, on how climate change is affecting polar bears in the Arctic regions. We are so knowledgeable about this topic now! In our geography lesson, we discussed about how our learning of how the polar regions are making us feel – I then handed over to them, to come up with ideas for how we can create change at Portreath! Here are some of our polar art pictures.

Cherry Class



In science this week we have continued with our experiment around micro organisms and have been amazed by the speed of mould growth on different foods! Meanwhile, as part of our geography topic "How can we save our seas?" we were delighted to welcome the marine conservation manager from The Wildlife Trust in to explain the solutions for overfishing.





Portreath Primary School

AFTER SCHOOL CLUBS

PLEASE NOTE ALL CLUBS INCLUDING BREAKFAST CLUB MUST NOW BE BOOKED & PAID IN ADVANCE ON PARENT PAY.

Breakfast by 9pm night before and After School Clubs by 12pm on the day.

After School Clubs are now until **4:15pm** or 5pm, there's a slight increase in costs.

Monday	Mindfulness with Miss Cafe Library/homework with Mrs Barnes
Tuesday	KS1 Multi Sport with Miss Cafe KS2 Multi Sport with Mrs Barnes
Wednesday	Craft Club with Mrs Barnes & Miss Cafe Maths Whizz (free until 4:15pm) with Mrs Kerlake
Thursday	Outdoor Rangers with Miss Cafe & Mrs Barnes Library/card games with Mrs Chiplin Netball yr5/6 - (high 5 version) with Mrs Jones & Mrs Whitford
Friday	Wraparound fun with Mrs Barnes Irish Dancing with Miss Noble

REMINDERS

HARVEST-PLEASE BRING IN FOOD FOR US TO DONATE TO THE FOODBANK ON OR BEFORE WEDNESDAY 23RD OCTOBER.

PARKING WILL BE LIMITED AFTER WEDS 16TH FOR STAFF - PLEASE BEAR WITH US DURING THE NEW CLASSROOM BUILDING.

Attendance

This week's attendance is as follows:

Maple Class - 97.8%
 Rowan Class - 90%
 Sycamore Class - 91.7%
 Birch Class - 93.6%
 Oak Class - 94.4%
 Cherry Class - 95.2%
 Whole school attendance for the year is currently is : 96.7%

PE DAYS

Maple - Thursday
Rowan - Tuesday
Sycamore - Tuesday
Birch - Thursday
Oak - Thursday
Cherry - Monday

DATES

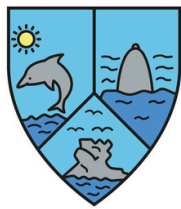
25th Oct - Deadline Xmas IQ Card orders returned
 22nd Nov - School Christmas Fair
 11th Dec - Maple Nativity 9:30am & 2pm
 12th Dec - Hall for Cornwall 'Jack & the beanstalk'
 13th Dec - Christmas Lunch & Jumper Day
 5th Dec - Open Class 2:50-3:20pm
 16th Dec - Rowan & Sycamore Xmas show 2pm & 6pm
 17th Dec - Christmas carol service 6pm
 11th Feb - Open Class 2:50-3:20pm
 31st Mar - Open Class 2:50-3:20pm
 21 May - Open Class 2:50-3:20pm
 9th Jun - Sports Day morning & lunch
 17th Jul - Open Class 2:50-3:20pm

TERM DATES

Half Term - w/c 28th October 2024
 Last Day Autumn Term - 18th December
 First Day Spring Term - 6th January 2025
 Half Term - w/c 17th February
 Last Day of Spring Term - 3rd April
 Bank Holiday - 21st April
 First Day Summer Term - 22nd April
 Bank Holiday - 5th May
 Half Term - w/c 26th May
 Last Day Summer Term - 22nd July

INSET DAYS

19th December 2024
 20th December 2024
 24th February 2025
 4th April 2025
 23rd July 2025



Community News

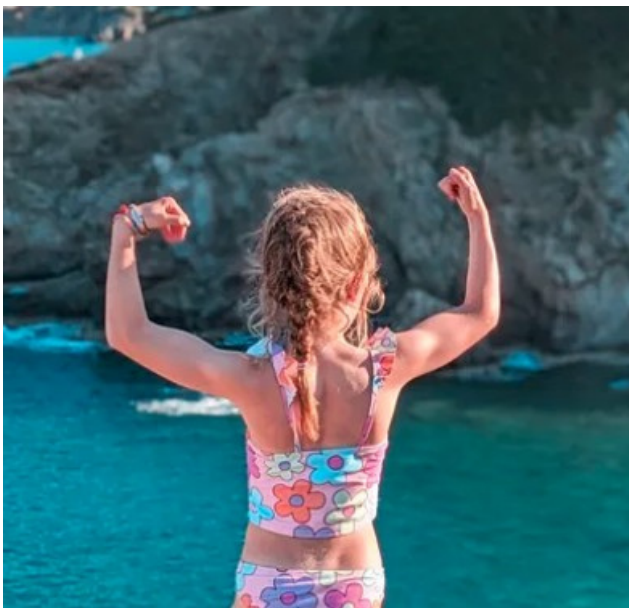
Mila's wants to brave the chop and donate her golden locks.

My name is Mila, I am 8 years old and want to try and make a difference. I am going to chop my golden locks and donate it to the princess trust, So someone who has gone through so much & lost their hair, can feel a bit more themselves and have mine.

Do you want to join me in making a difference? I'm raising money in aid of The Little Princess Trust and every donation will help. Thank you in advance for your contribution to this cause that means so much to me.

More information about the princess Trust: When a child loses their hair to cancer, we'll be there with a free, real hair wig to help restore their confidence and identity. You can help us give hair and hope to children and young people, by funding real hair wigs and ground-breaking childhood cancer research projects.

<https://www.gofundme.com/f/milas-wants-to-brave-the-chop-and-donate-her-golden-locks>



Scan to donate



The Linnet Trust
Charity reg no. 206365

COMMUNITY FUND

Garfield Weston FOUNDATION

GOOD GROWTH
CORNWALL & ISLES OF SCILLY
SHARED PROSPERITY FUND

GWEALAN TOPS
ADVENTURE PLAYGROUND

OCTOBER HALF TERM

MON 28 - FRI 1 NOV
11AM - 4PM
AGES: 7-16

FREE HOT MEAL @
12.30PM
01209 697 717
TR15 2ER

CHILDREN MUST BE REGISTERED
NEW USERS MUST BOOK AN
INDUCTION VISIT - SEE WEBSITE
FOR DATES
WWW.GWEALANTOPS.ORG