



NEWSLETTER

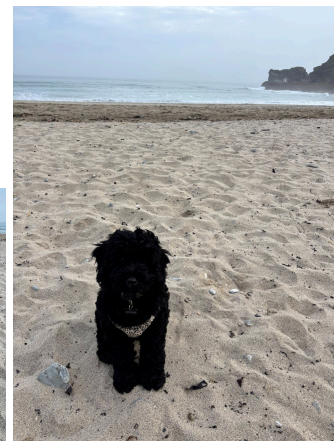
Thanks to all those who managed to join us for 'Open Class' on Monday. Don't worry if you did not manage to come, we will be sending home many of the books soon. Reports should have arrived home with your child today. A huge thanks to the teachers for writing these. It will have taken them many hours after school to write these. I love how personal each report is, it shows how well the staff know the children! This year we have added the attendance onto the report. So many of the children have excellent attendance-well done!

The school has been filled with creativity this week preparing for our show and we cannot wait for you to see our whole school performance next week! Today the children got to watch each other's performances. Then the drama club treated us to their performance of 'Little Red Riding Hood'-it was fantastic! Thanks to Mrs Barnes and Diane for all their hard work with the club.

On Wednesday all the staff stayed for our annual 'Review of the Year'. It was a time to reflect on all our great achievements as a school this year. The staff all really enjoyed the quotes from the parent surveys. It is amazing when you stop to think of all the brilliant things that have happened. There is so much! We also thought about what we need to work on going forward to make the school even better! We were also lucky enough to enjoy some delicious snacks and cakes from Jay Bird Deli in Portreath!

Lyra has settled so well into school life. The children are always delighted to see her, and she is always excited to see them. We have managed some more visits to the beach before school this week. I thought I would share a few photos because I thought the children would love to see her having fun at the beach.

Cassie Pamplin



CERTIFICATES OF EXCELLENCE



Maple Class: Lomorna - For being kind to others.

Rowan Class: Ella.T - For showing resilience

Sycamore Class: Alfie - For always trying his best

Birch Class: Frank.S - For being creative while creating our dance piece for the show.

Hazel Class: Harry - For always being kind, engaged and hard working

Cherry Class: Harry - For super enthusiasm in our play ..."Be more Harry!"

SPORTS STAR

Kenzie



STAR WRITERS



Bill
Freddie
Archie
Callum
Eva
Kenzie

PORTREATH LEAVES



Leo.J & Chloe
Orla
Charlie
Skye
Sophie
Lowen

20 READS STAR

Florence





Portreath

Primary School

THOUGHT OF THE WEEK

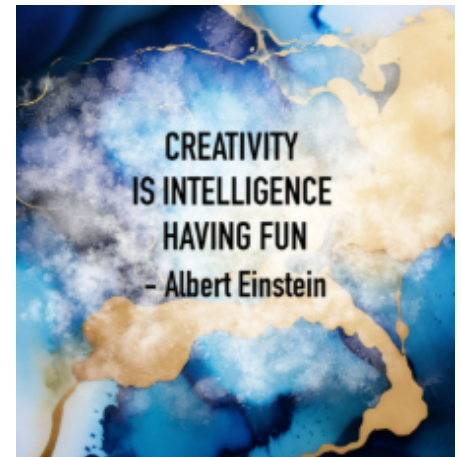
Some helpful websites linked to safeguarding and online safety:

The UK Safer Internet Centre, where you can find online safety tips, advice and resources to help children and young people stay safe online.

ThinkuKnow – advice for Parents on internet safety
Childnet International – all the information you need to keep your child safe online

Internet matters – supporting families online.

www.gov.uk/government/publications/the-use-of-social-media-for-online-radicalisation



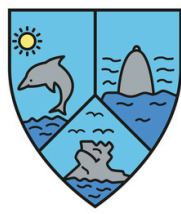
House Winner this Week is: Farthing Wood

PE News

Last Friday some of the children in Cherry took part in a Multi Sports Event at Pool Academy. The children took part in a range of activities and exercises. They really pushed themselves and challenged themselves to beat their previous set. Well done to Kenzie for winning a medal.

Hazel and Cherry had a great rugby session with the Cornish Pirates, playing some team games to work on their passing. Then they practiced their kicks to try and score points for their teams, finished with a crossbar challenge.





Portreath Primary School

Maple Class



This week has been all about the end of year show. We have made fish by using old CD's and making them all sparkly. We have learnt a song and have been practicing speaking Spanish. Everybody has helped to decorate the classroom ready for our fabulous performance on Monday.



Rowan Class



This week we have been busy preparing for Monday's performance. We have been working with Erica to perfect our dance, and we created some flags and Ecuador-inspired patterns to decorate the classroom.



Sycamore Class



Wowzers what a hot week!! We have been busy busy learning our fabulous song and dance ready for Monday 😊 We were lucky enough to visit Illogan Church and take part in a scavenger hunt and spoke about how we could protect the environment. We have enjoyed spending time outdoors with each other and loved reflecting on everything we have covered this year.





Portreath Primary School

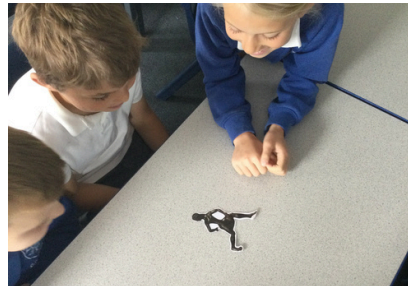
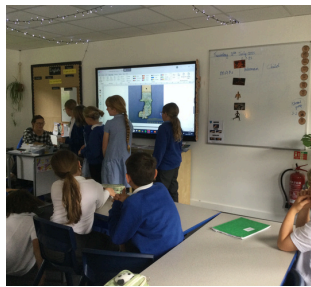
Birch Class



It has been lovely to have everyone back together this week. We have been busy getting ready for the end of year show. We have shown great inclusion and kindness while working together. In DT, we have been putting the final touches to our sandwich design, they look delicious.



Hazel Class



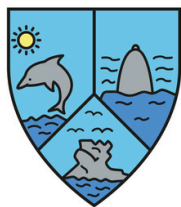
It's been a brilliantly busy week in Hazel! We had a great discussion, in history, about ancient artefacts from Inuits in Greenland, the Shang Dynasty and Ancient Greeks. We challenged our ideas around gender roles in these societies. We have then had a creative week, setting up for the show!

Cherry Class



We started this week by hosting the Grand Sale for our Enterprise businesses. It was very well supported by the whole school ; we sold out and amazingly we raised over £355 profit for the R.S.P.C.A. During the rest of the week, we have been busy rehearsing for our whole school show and being creative in our prop making.





Portreath Primary School

PLEASE NOTE ALL CLUBS INCLUDING BREAKFAST CLUB MUST NOW BE BOOKED & PAID IN ADVANCE ON PARENT PAY. Breakfast by 9pm night before and After School Clubs by 12pm on the day.

After School Clubs are now until 4:15pm or 5pm.

Outdoor Rangers is now twice a week (children can only attend 1).

| | |
|-----------|---------------------------------------------------------------------------------------------------------------------------------------------|
| Monday | Cooking Club with Mrs Barnes and Miss Cafe KS1 Multi sports with Mrs Seary |
| Tuesday | Outdoor Rangers with Miss Cafe Drama club with Mrs Barnes KS2 Multi sports with Mrs Seary |
| Wednesday | Craft club with Mrs Barnes & Miss Cafe |
| Thursday | Outdoor Rangers with Miss Cafe & Mrs Barnes Lego club with Mrs Chiplin Netball yr5/6 - (high 5 version) with Mrs Jones & Mrs Whitford |
| Friday | Film club with Mrs Barnes & Miss Noble |

REMINDERS

NO AFTER SCHOOL CLUBS ON OUR LAST DAY 22ND JULY

REMEMBER SUNHATS & APPLY SUN CREAM AT HOME PLEASE!

Attendance

This week's attendance is as follows:

Maple Class - 97%
Rowan Class - 96.7%
Sycamore Class - 96.1%
Birch Class - 95%
Hazel Class - 89.7%
Cherry Class - 99.1%

Whole school attendance for the year is currently is : 95.7%

PE DAYS

Maple - Thursday
Rowan - Tuesday
Sycamore - Monday
Birch - Tuesday
Hazel - Thursday
Cherry - Thursday

DATES

11th Jul - School reports out
14th Jul - Summer performance 2pm & 6pm
16th Jul - Time in new class in the afternoon

TERM DATES

Last Day Summer Term - 22nd July
First Day Autumn Term - 4th Sept 2025
Half Term - w/c 27th Oct
Last Day Autumn Term - 17th December
First Day Spring Term - 5th January 2026
Half Term - w/c 16th February
Last Day of Spring Term - 2nd April
Bank Holiday - 3rd April
First Day Summer Term - 20th April
Bank Holiday - 4th May
Half Term - w/c 25th May
Last Day Summer Term - 22nd July

INSET DAYS

23rd July 2025
3rd Sep 2025
3rd Nov 2025
18th Dec 2025
19th Dec 2025
23rd Feb 2026
1st Jun 2026
23rd Jul 2026

**SEN
Lego Club**

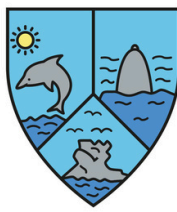
Two bookable Lego sessions aimed at children with SEN.

To book a place, please email redruth.library@liscornwall.org.uk

30th July 10:00-12:00
27th August 10:00-12:00

Free to attend. Email us to book.

Portreath Primary School, throughout the year, distributes fliers and magazines offering family services or posts details of local activities on the newsletter. Whilst we think that parents might like the information and find it useful, the school does not endorse these services.



Portreath Primary School

Amazing Sale of Products

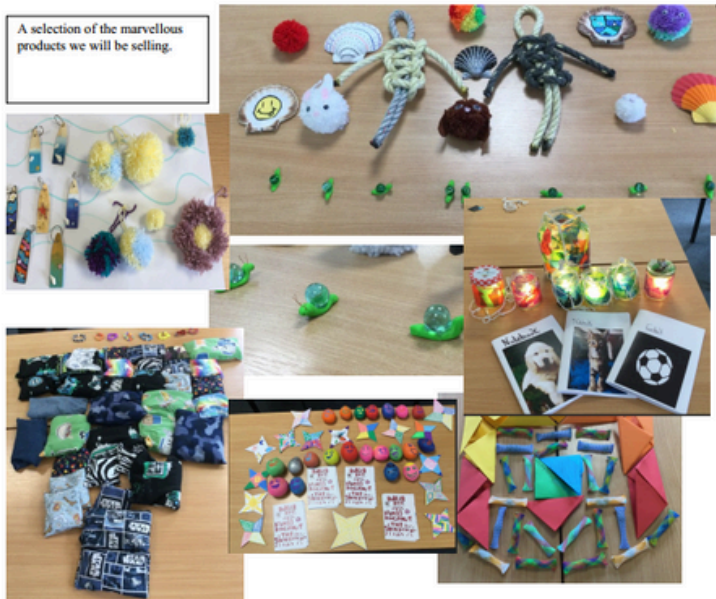
Monday 7th July.

On Monday 7th July Cherry Class will be holding a Grand Sale for the products they have made whilst running their own businesses this half term (see the photos of examples of what will be on sale). Prices will range from 25p to £2. All children will be given the opportunity to visit the sale during school time. Please send your child's money in with them in a named envelope / purse on Monday morning (maximum of £3). Please can this be in a variety of coins to help us with change.

Cherry Class have worked extremely hard with this enterprise and have decided to donate all profit to the R.S.P.C.A so they would really appreciate everyone's support with this.

At the end of the day the remaining stock will be available for sensible donations at a stall near the school gate – so please bring your purses along !

A selection of the marvellous products we will be selling.



Community News

